

03 Generator set hinges

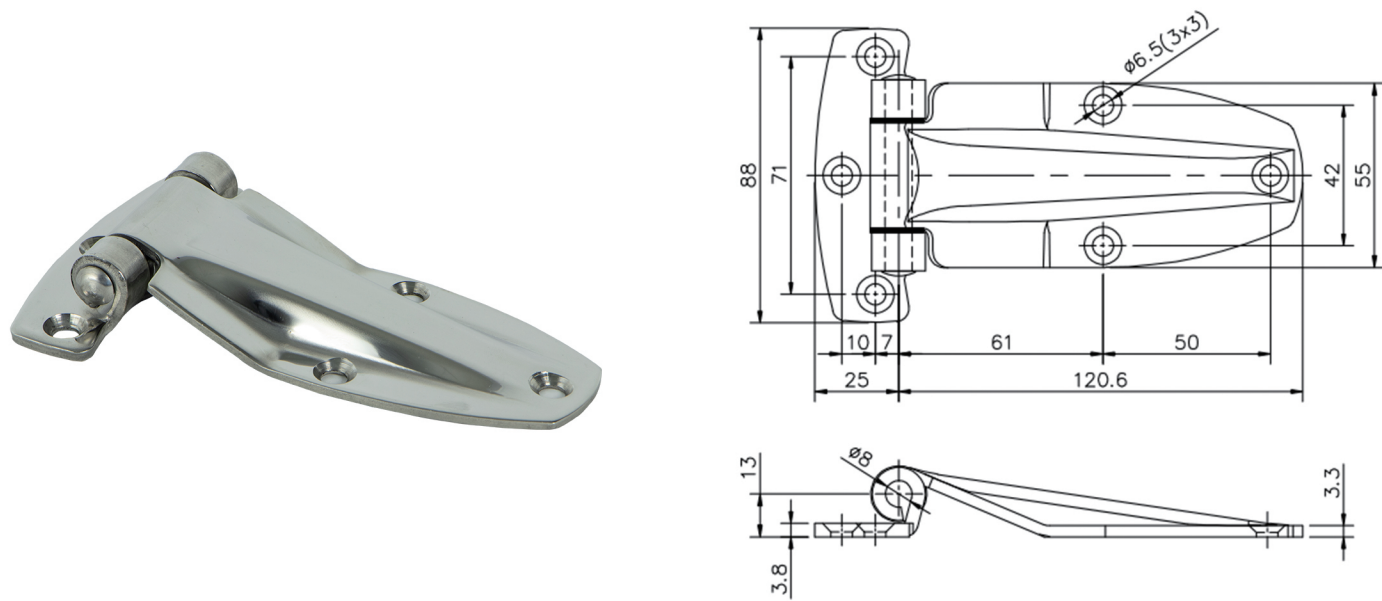
P91~104



◆ Generator set hinge series

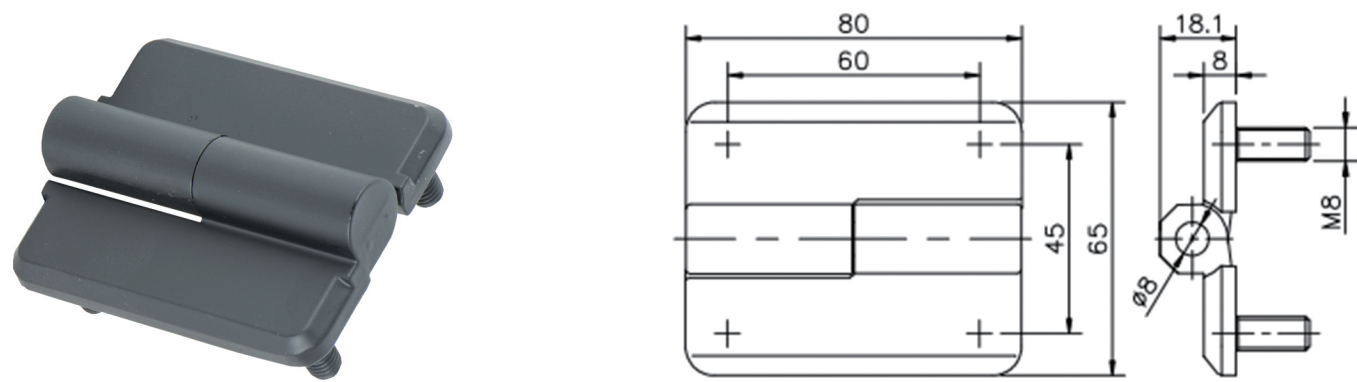
180S01	180S03	180S04	180S05	180S06	180S10
180S11大孔	180S13	180S15	180S17	180S18	180S21
180S21四孔	180S22	180S24	180S25	180S25-A	180S26
180S28	180S30	180S31			

◆ 180S01



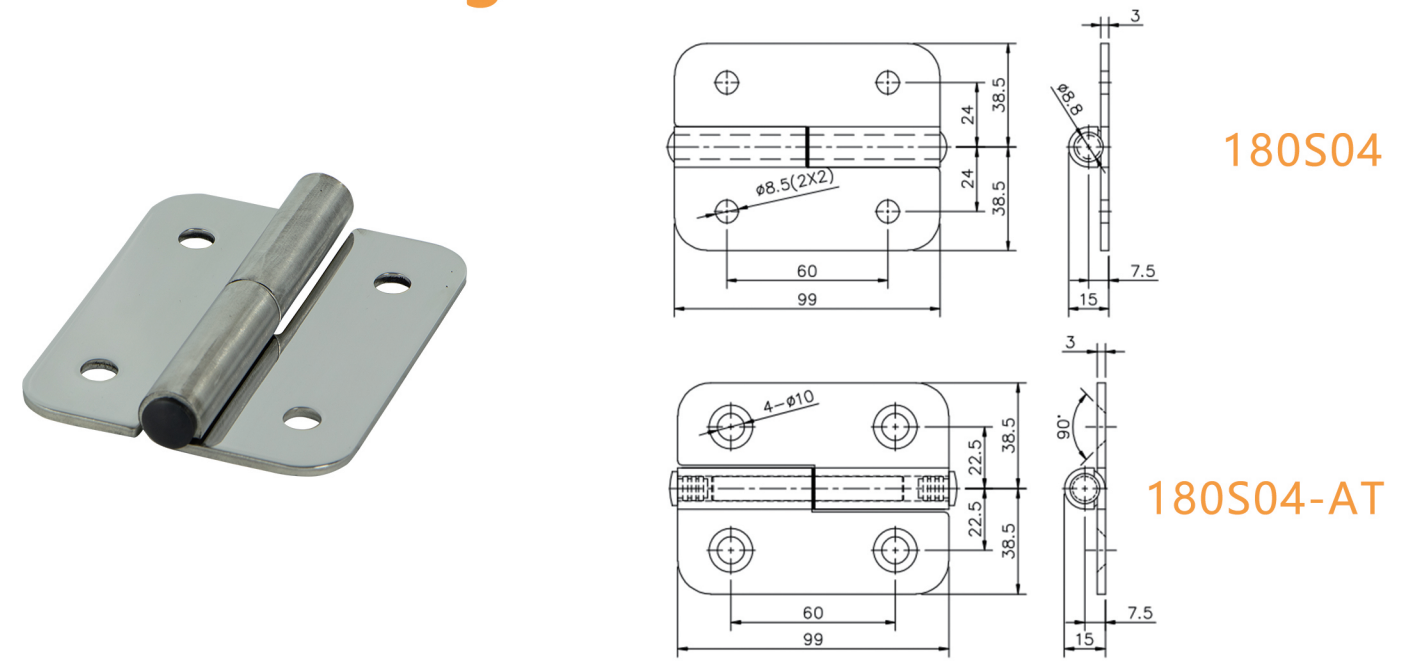
Model	Material	Surface treatment	Performance specification		Installation method	Opening and closing angle
			SUS	Carbon steel		
180S01	SUS304/carbon steel	Bright polished/powder coated	Maximum radial load : 5.2KN	4KN	Punching	180°

◆ 180S03



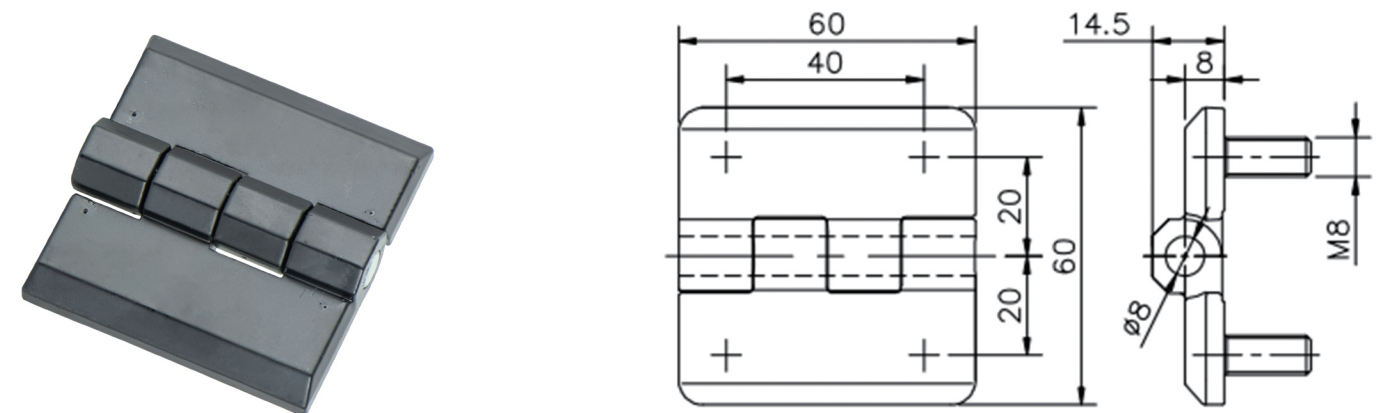
Model	Material	Surface treatment	Performance specification		Installation method	Opening and closing angle
			Zinc alloy			
180S03	Zinc alloy	Black powder coated	Maximum radial load : 5.2KN		Studs	180°

◆ 180S04 Hinge series



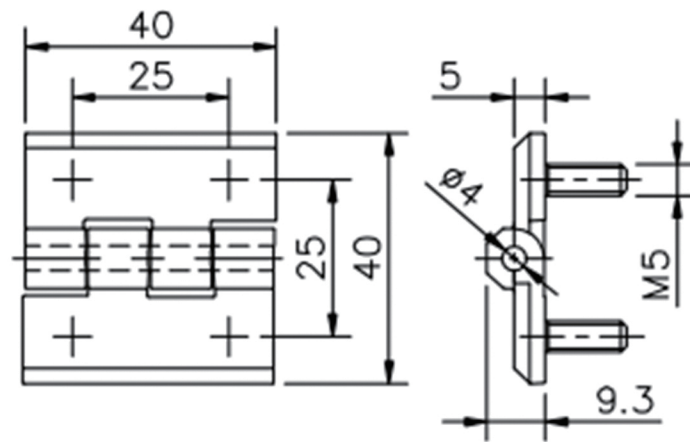
Model	Material	Surface treatment	Performance specification		Installation method	Opening and closing angle
			SUS	Carbon steel		
180S04 180S04-AT	SUS304/carbon steel	Bright polished/powder coated	Maximum radial load : 6KN	5.1KN	Punching	180°

◆ 180S05



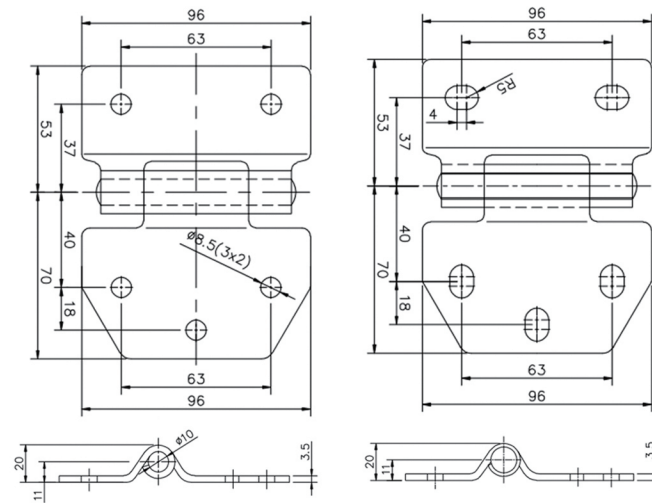
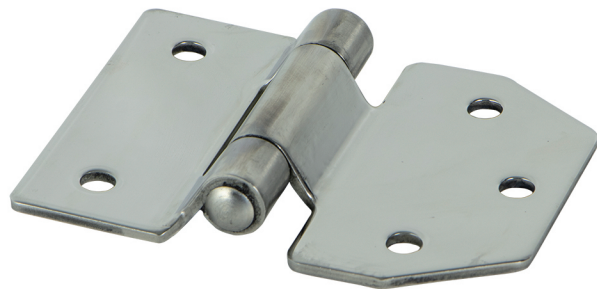
Model	Material	Surface treatment	Performance specification		Installation method	Opening and closing angle
			Zinc alloy			
180S05	Zinc alloy	Black powder coated	Maximum radial load : 5.4KN		Studs	180°

◆ 180S06



Model	Material	Surface treatment	Performance specification	Installation method	Opening and closing angle
180S06	Zinc alloy	Black powder coated	Zinc alloy	Studs	180°
			Maximum radial load : 2.4KN		

◆ 180S10 Hinge series

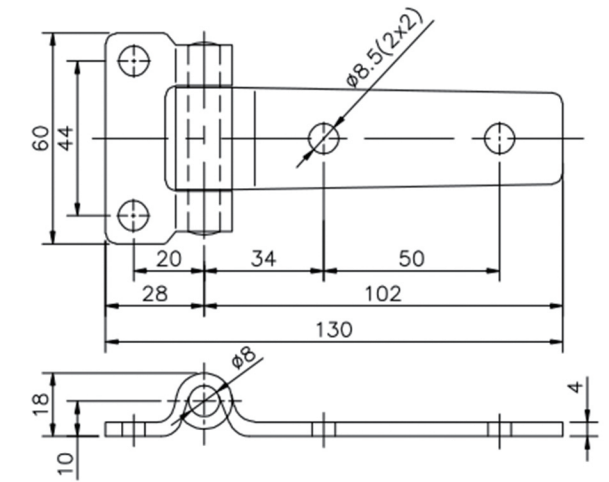


180S10

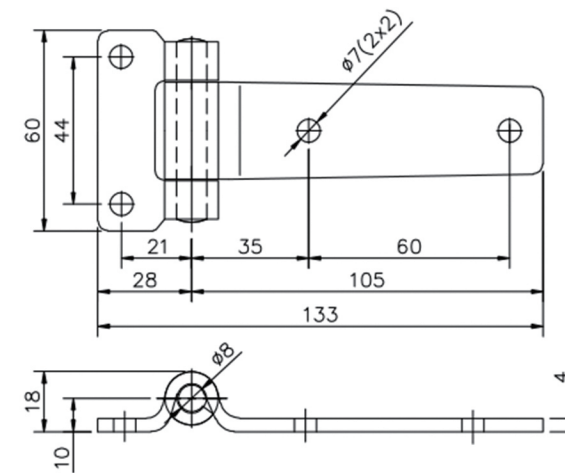
180S10-B

Model	Material	Surface treatment	Performance specification	Installation method	Opening and closing angle
180S10 180S10-B	SUS304/carbon steel	Bright polished/galvanized steel	SUS	Punching	180°
			Carbon steel		
			Maximum radial load : 5.6KN		
			4.9KN		

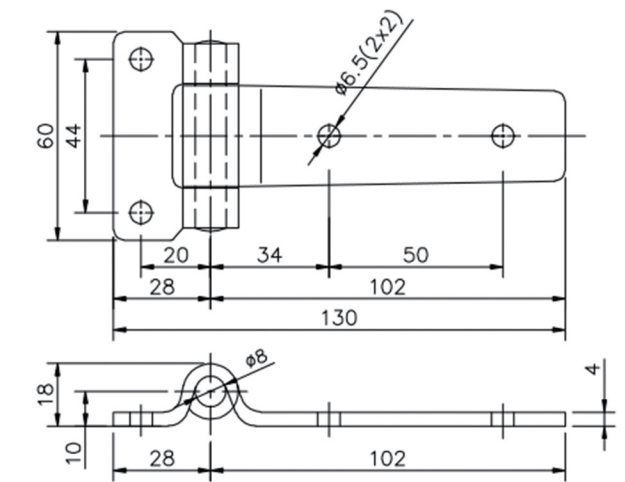
◆ 180S11 Hinge series



180S11



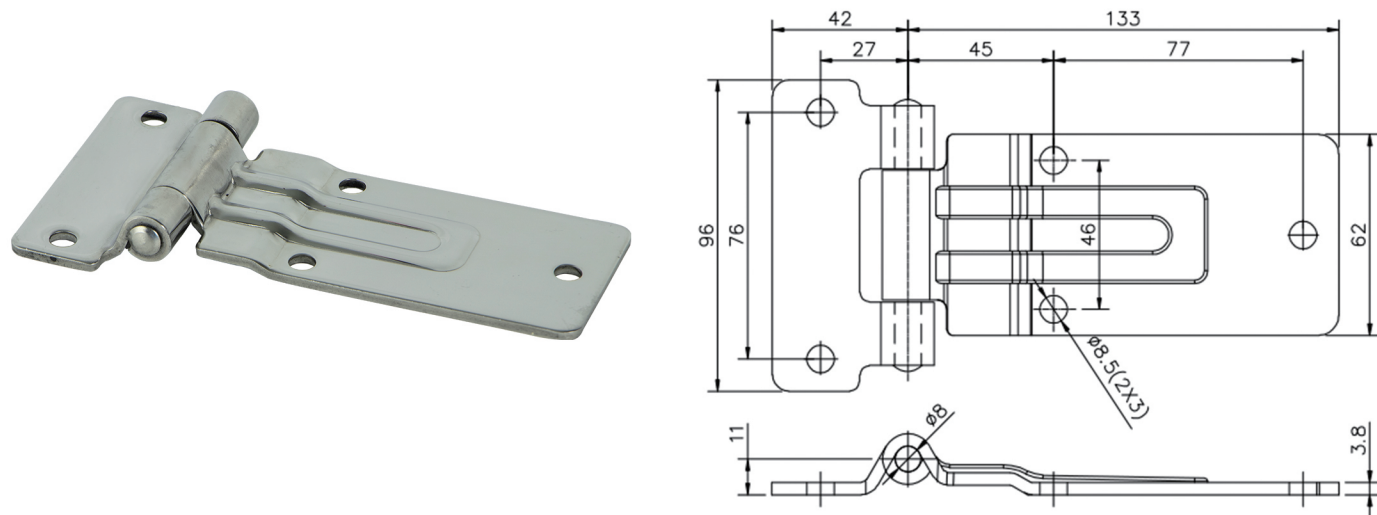
180S11-B



180S11-F

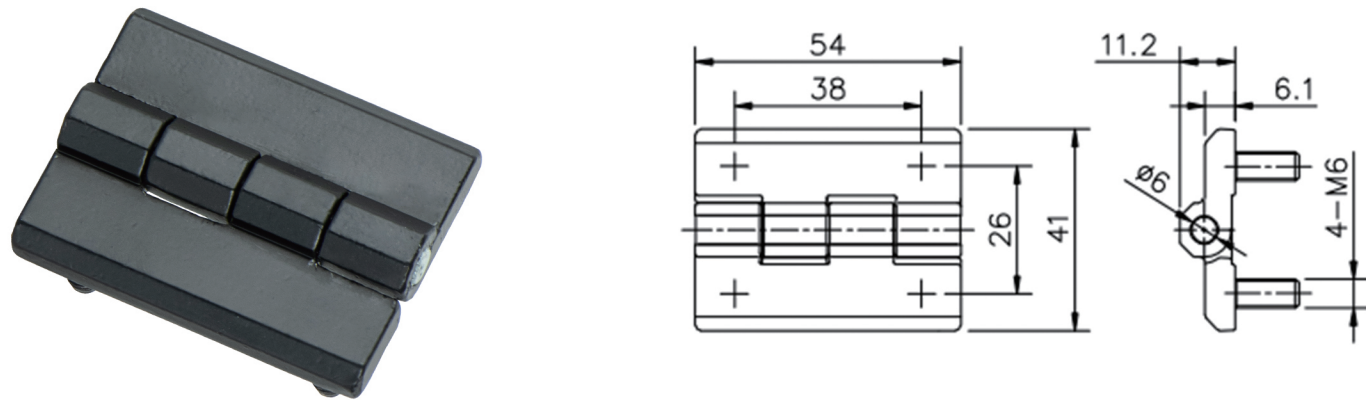
Model	Material	Surface treatment	Performance specification	Installation method	Opening and closing angle
180S11 180S11-B 180S11-F	SUS304	Bright polished	SUS	Punching	180°
			Maximum radial load : 3.2KN		

◆ 180S13



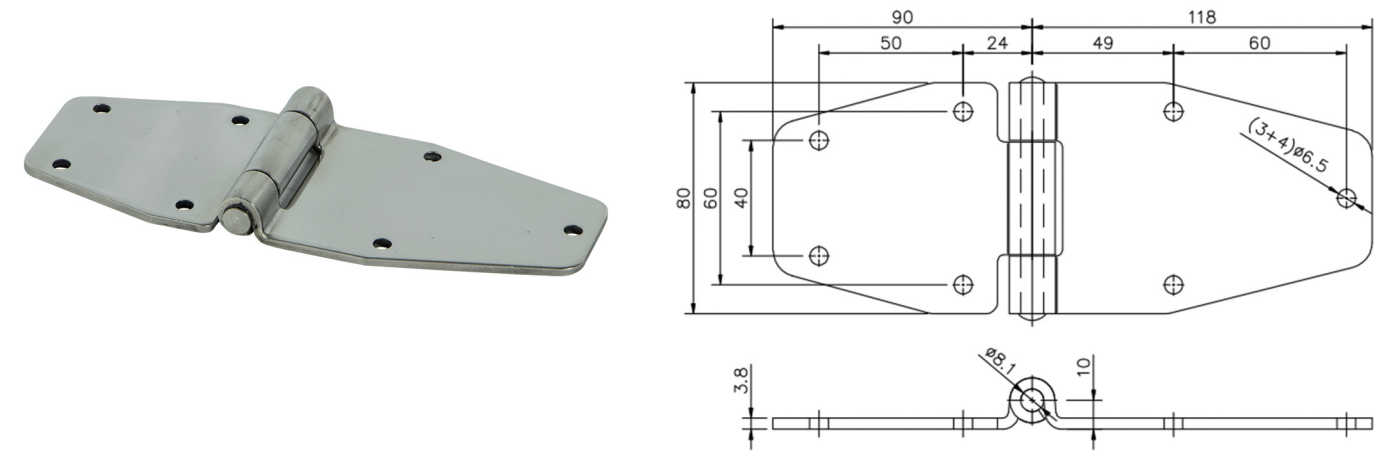
Model	Material	Surface treatment	Performance specification	Installation method	Opening and closing angle
180S13	SUS304	Bright polished	SUS	Punching	180°
			Maximum radial load : 4.2KN		

◆ 180S15



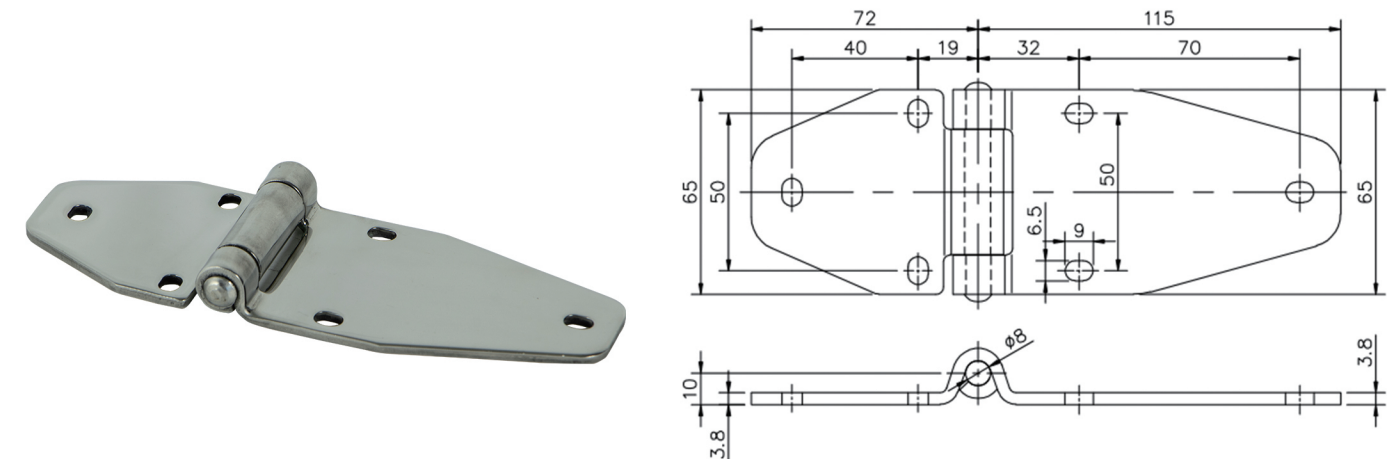
Model	Material	Surface treatment	Performance specification	Installation method	Opening and closing angle
180S15	Zinc alloy	Black powder coated	Zinc alloy	Studs	180°
			Maximum radial load : 3.4KN		

◆ 180S17



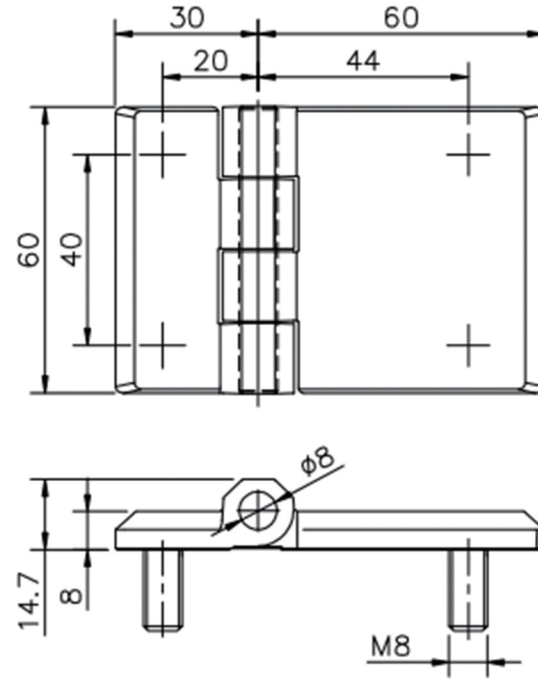
Model	Material	Surface treatment	Performance specification	Installation method	Opening and closing angle
180S17	SUS304/carbon steel	Bright polished/galvanized steel	SUS	Punching	180°
			Carbon steel		
			Maximum radial load : 3.7KN		

◆ 180S18

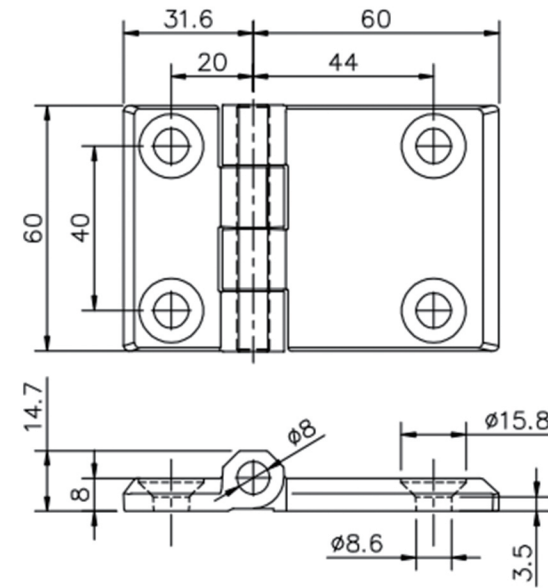


Model	Material	Surface treatment	Performance specification	Installation method	Opening and closing angle
180S18	SUS304/carbon steel	Bright polished/powder coated	SUS	Punching	180°
			Carbon steel		
			Maximum radial load : 3.7KN		

◆ 180S21 Hinge series



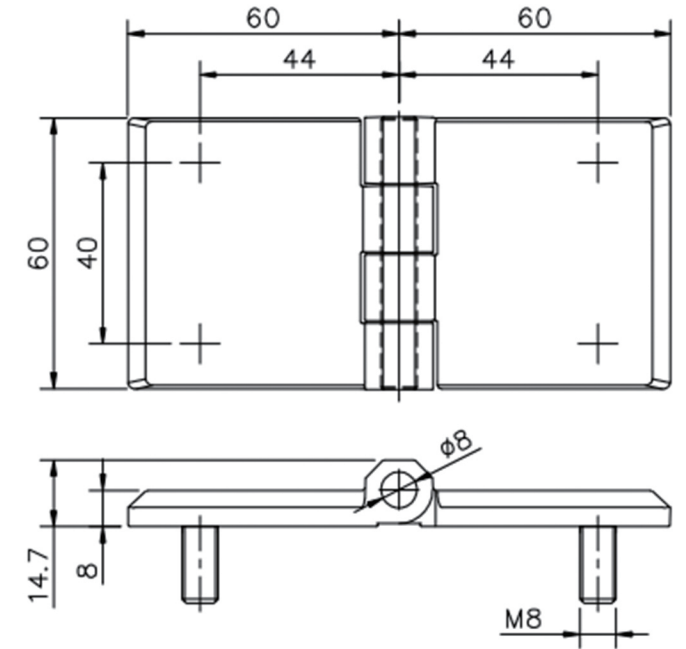
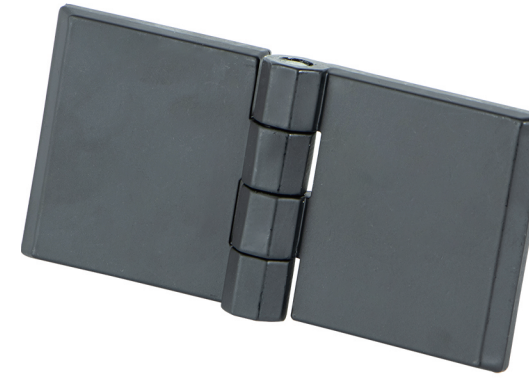
180S21



180S21 Four holes

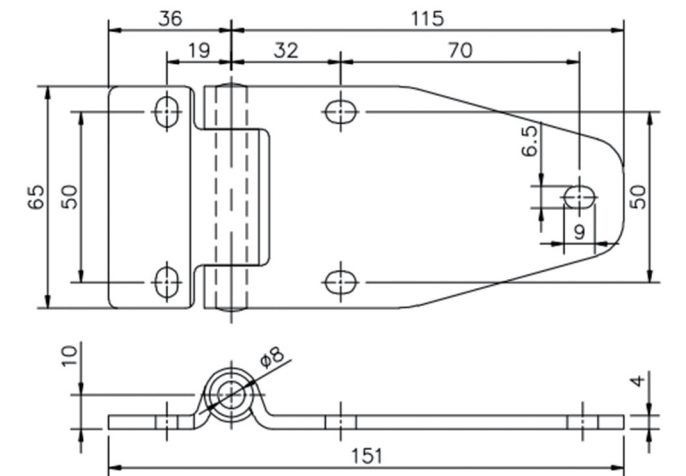
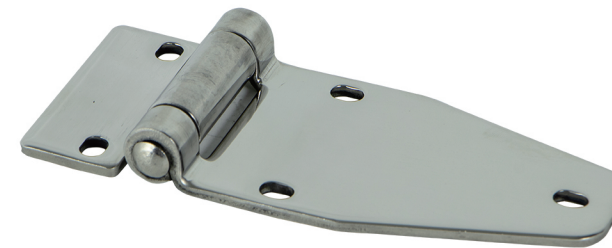
Model	Material	Surface treatment	Performance specification	Installation method	Opening and closing angle
180S21 180S21Four holes	Zinc alloy	Black powder coated	Zinc alloy	Punching/Studs	180°
			Maximum radial load : 2.3KN		

◆ 180S22



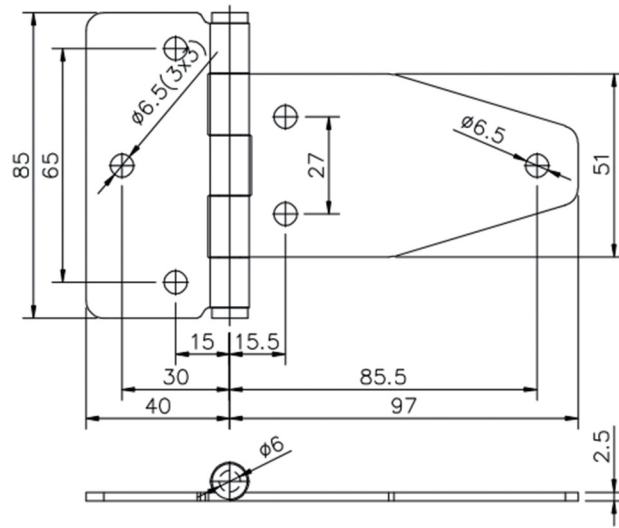
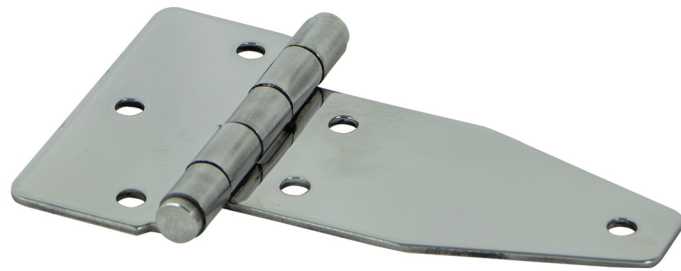
Model	Material	Surface treatment	Performance specification	Installation method	Opening and closing angle
180S22	Zinc alloy	Black powder coated	Zinc alloy	Studs	180°
			Maximum radial load : 2.1KN		

◆ 180S24

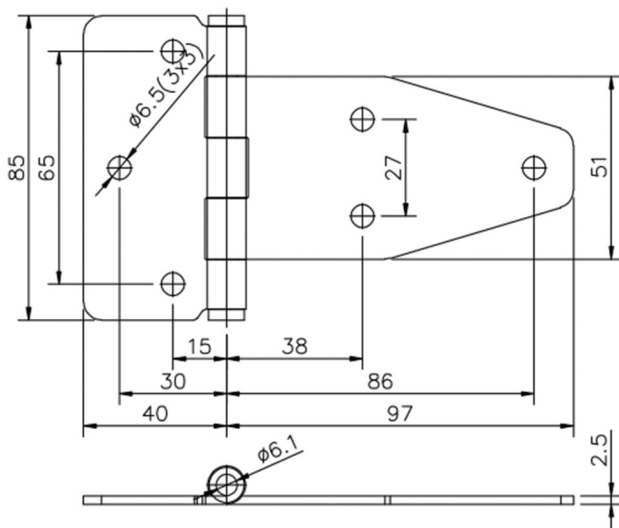
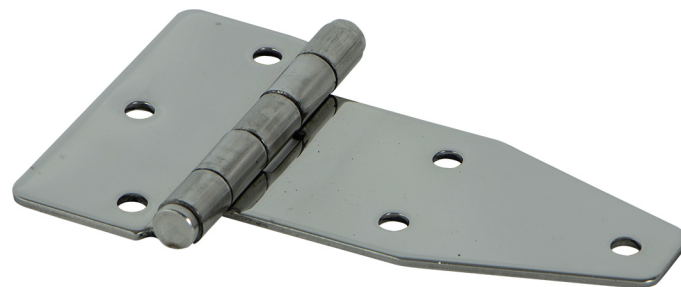


Model	Material	Surface treatment	Performance specification	Installation method	Opening and closing angle
180S24	SUS304/carbon steel	Bright polished/powder coated	SUS	Punching	180°
			Carbon steel		
			Maximum radial load : 4.3KN	3.6KN	

◆ 180S25 Hinge series



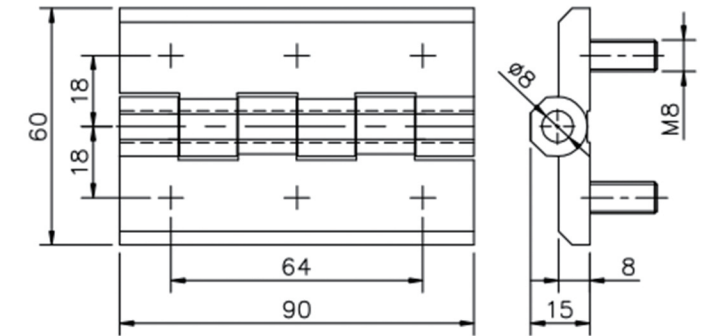
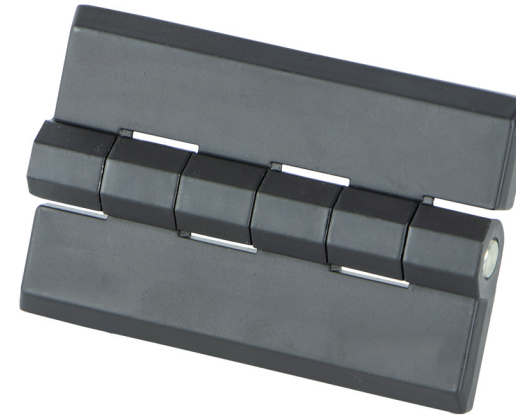
180S25



180S25-B

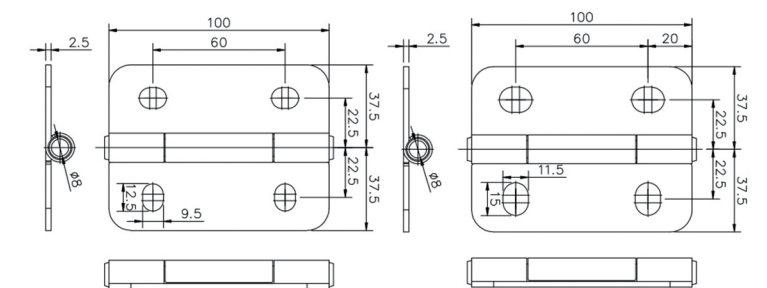
Model	Material	Surface treatment	Performance specification	Installation method	Opening and closing angle
180S25 180S25-B	SUS304	Bright polished	SUS	Punching	180°
			Maximum radial load : 4.7KN		

◆ 180S26



Model	Material	Surface treatment	Performance specification	Installation method	Opening and closing angle
180S26	Zinc alloy	Black powder coated	Zinc alloy	Studs	180°
			Maximum radial load : 6.8KN		

◆ 180S28 Hinge series

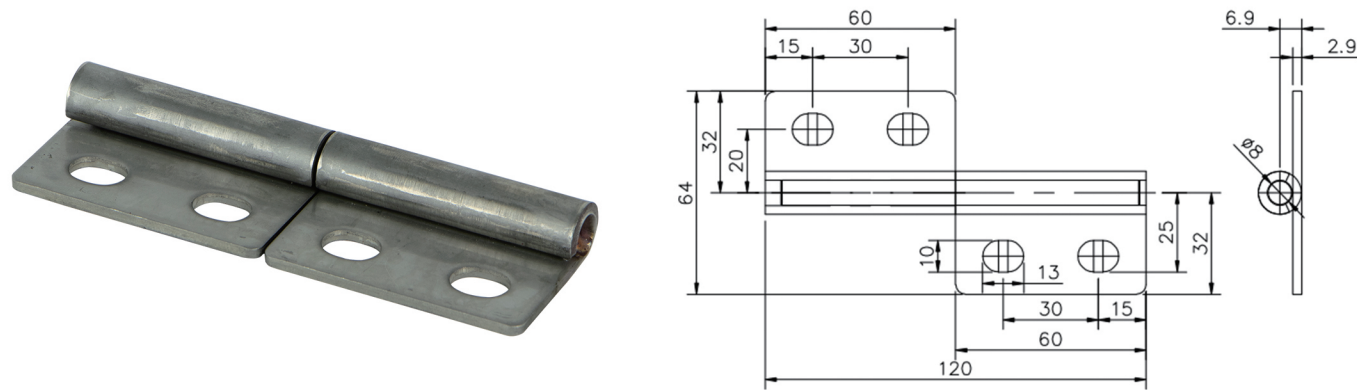


180S28

180S28-B

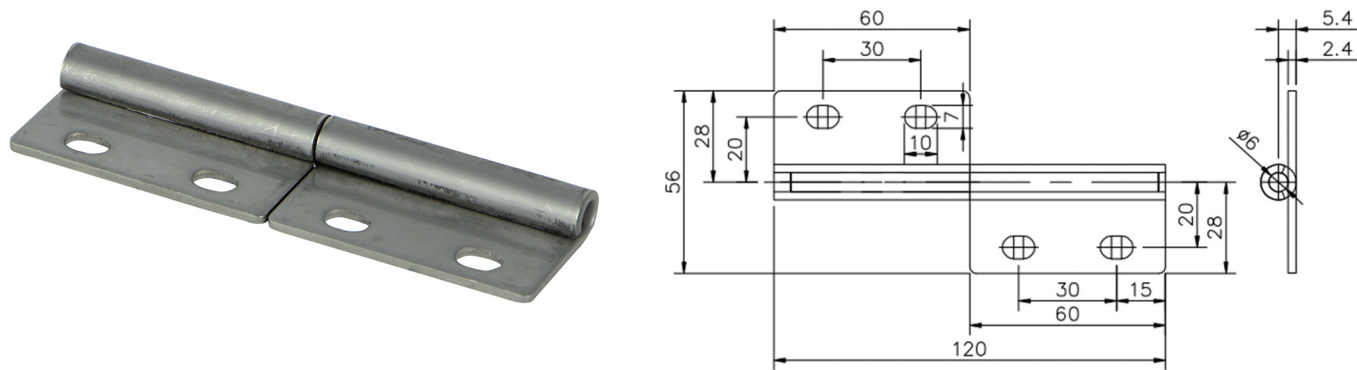
Model	Material	Surface treatment	Performance specification	Installation method	Opening and closing angle
180S28 180S28-B	Carbon steel	Black powder coated	Carbon steel	Punching	180°
			Maximum radial load : 6KN		

◆ 180S30



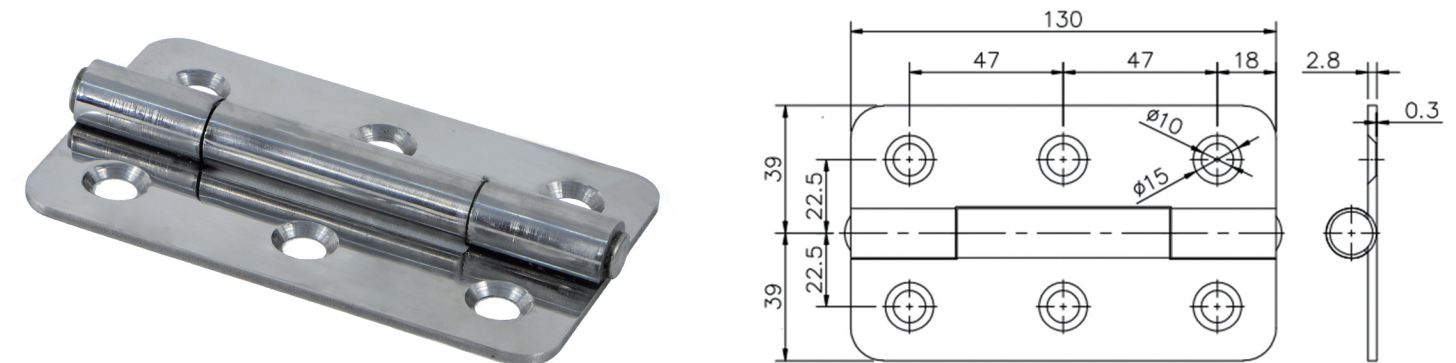
Model	Material	Surface treatment	Performance specification	Installation method	Opening and closing angle
180S30	SUS304	Stainless steel primary color	SUS	Punching	180°
			Maximum radial load : 3.5KN		

◆ 180S31



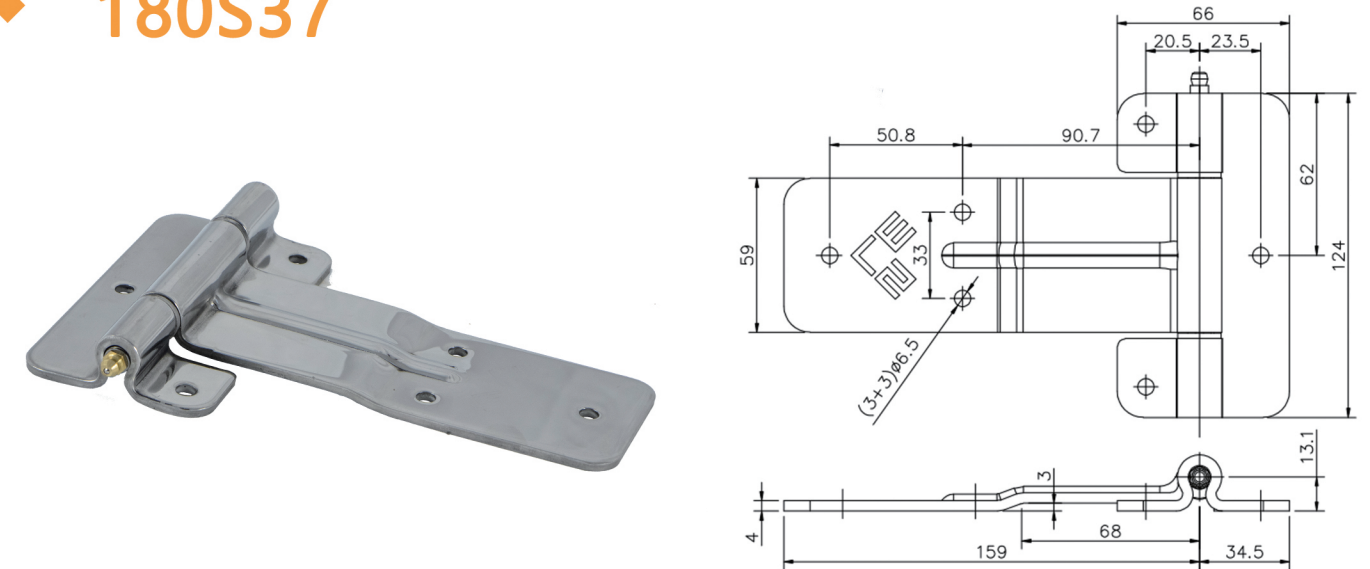
Model	Material	Surface treatment	Performance specification	Installation method	Opening and closing angle
180S31	SUS304	Stainless steel primary color	SUS	Punching	180°
			Maximum radial load : 0.7KN		

◆ 180S32



Model	Material	Surface treatment	Performance specification	Installation method	Opening and closing angle
180S32	SUS304	Bright polished	SUS	Punching	180°
			Maximum radial load : 6.2KN		

◆ 180S37



Model	Material	Surface treatment	Performance specification	Installation method	Opening and closing angle
180S37	SUS304	Bright polished	SUS	Punching	180°
			Maximum radial load : 6KN		